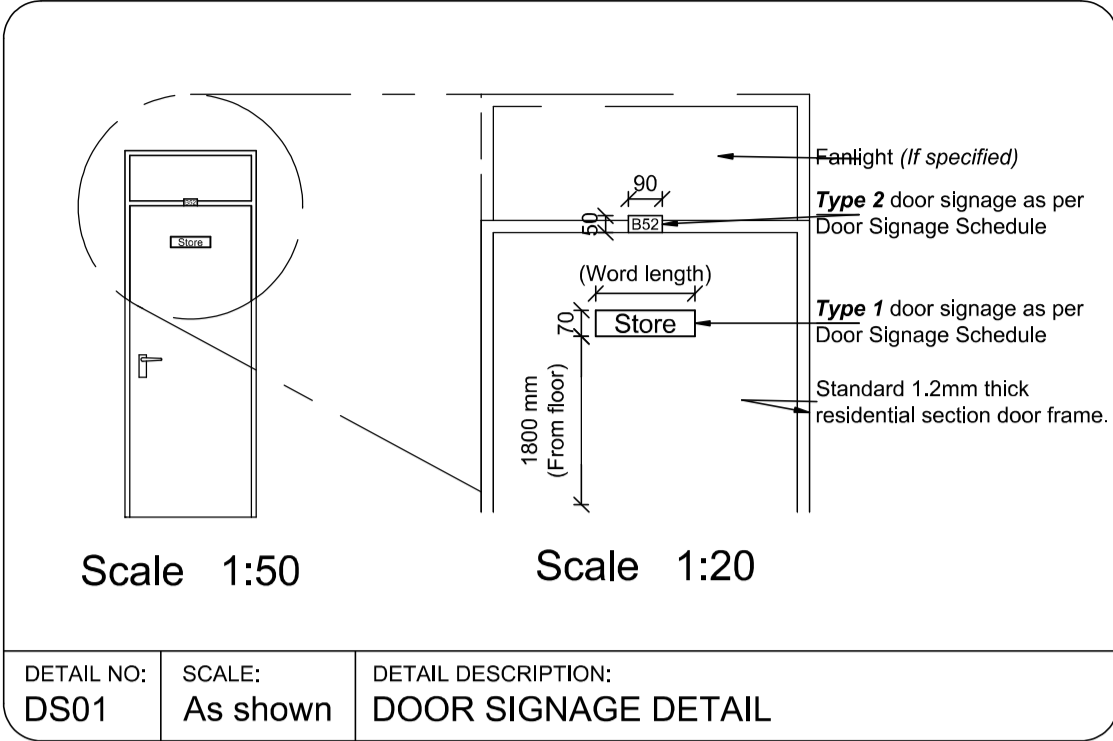
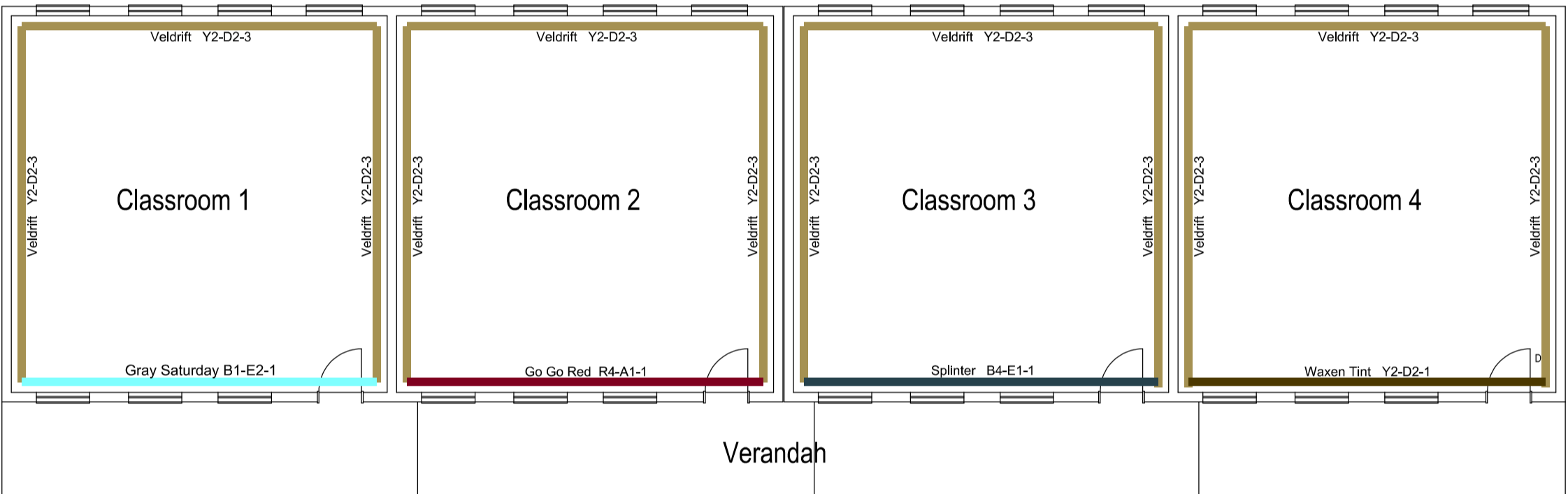


	Refer to plan for handing	Refer to plan for handing
TYPE:	D3	G2 (as per DETAIL G2)
FRAME:	1.2mm galvanised pressed metal 1 No. frame suitable for 230mm wall	45x45x3mm Square tubing frame bolted to face of wall.
F.FINISH:	Galvanised. Not painted.	1x primer coat, 1x universal undercoat & 2x coats gloss enamel paint
DOOR:	2032X813X40mm Solid flush panel door with venerer both sides	40x60x2mm Square tubing in gate surround. 40X6mm Flat mild steel rail holed for 19mmØ vertical rods and welded to surround.
D.FINISH:	Wood primer, one coat undercoat and two coats gloss	1x primer coat, 1x universal undercoat & 2x coats gloss enamel paint
FURNITURE	(1x) ASSA ABLOY 2X18SC CYLINDER PROFILE STD  (1x) ASSA ABLOY 87001SS FLOOR DOOR STOP SATIN SS  (1x) ASSA ABLOY AL6045-05AS CEDAR ON PLATE PROFILE  (3x) Hinges by Frame Manufacturer  (1x) L-22315-76SS UNION 315 DOORLOCK SS  (1x) Cabin hook & Eye	(1x) UNION MG47 47MM PADLOCK  (3x) HINGES BY FRAME MANUFACTURER.
SCALE:	1:50	DETAIL DESCRIPTION: DOOR SCHEDULE

u/s lintol	
TYPE:	W9
FRAME:	SS School Type rolled steel window sections. SABS approved.
GLASS:	6,38mm Clear laminated safety glass (top panels) & 6,38mm Obscure laminated safety glass (bottom panels) embedded into frame with steel window putty.
FITTING:	Approved standard brass fittings completed with window.
B. BARS	Ø8mm bars
FINISH:	Galvanised. No Painting required
NOTES:	Courses adjacent to window jambs are to have cares filled allowing fixing lugs to be built-in
SCALE:	1:50
DETAIL DESCRIPTION:	WINDOW SCHEDULE



Type 1:	<b>Store</b>	Letters: English, Arial Height: 50mm Colour/Finish: Black letters on anodised silver background Size: 2.5mm x 70mm x word length, fixed to door Required: a) Classroom 8, 9,10,11
Information Signage Custom made Aluminium Plates		
1:10 DOOR SIGNAGE (TYPE 1)		
Type 2:	<b>C1</b>	Letters: English, Arial Height: 30mm Colour/Finish: Black letters on anodised silver background Size: 2.5 x 50mm X word length, fixed to doorframe at top Numbers: Refer to C1; C2; C3; on New Floor Layout
Information Signage Custom made Aluminium Plates		
1:10 DOOR SIGNAGE (TYPE 2)		

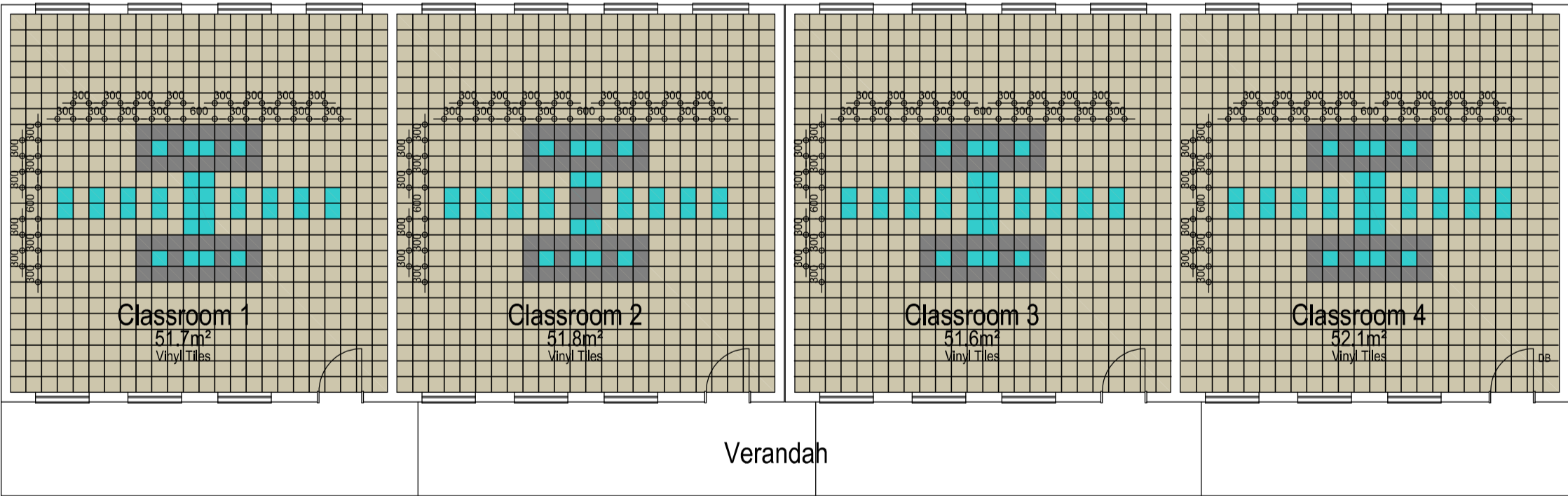
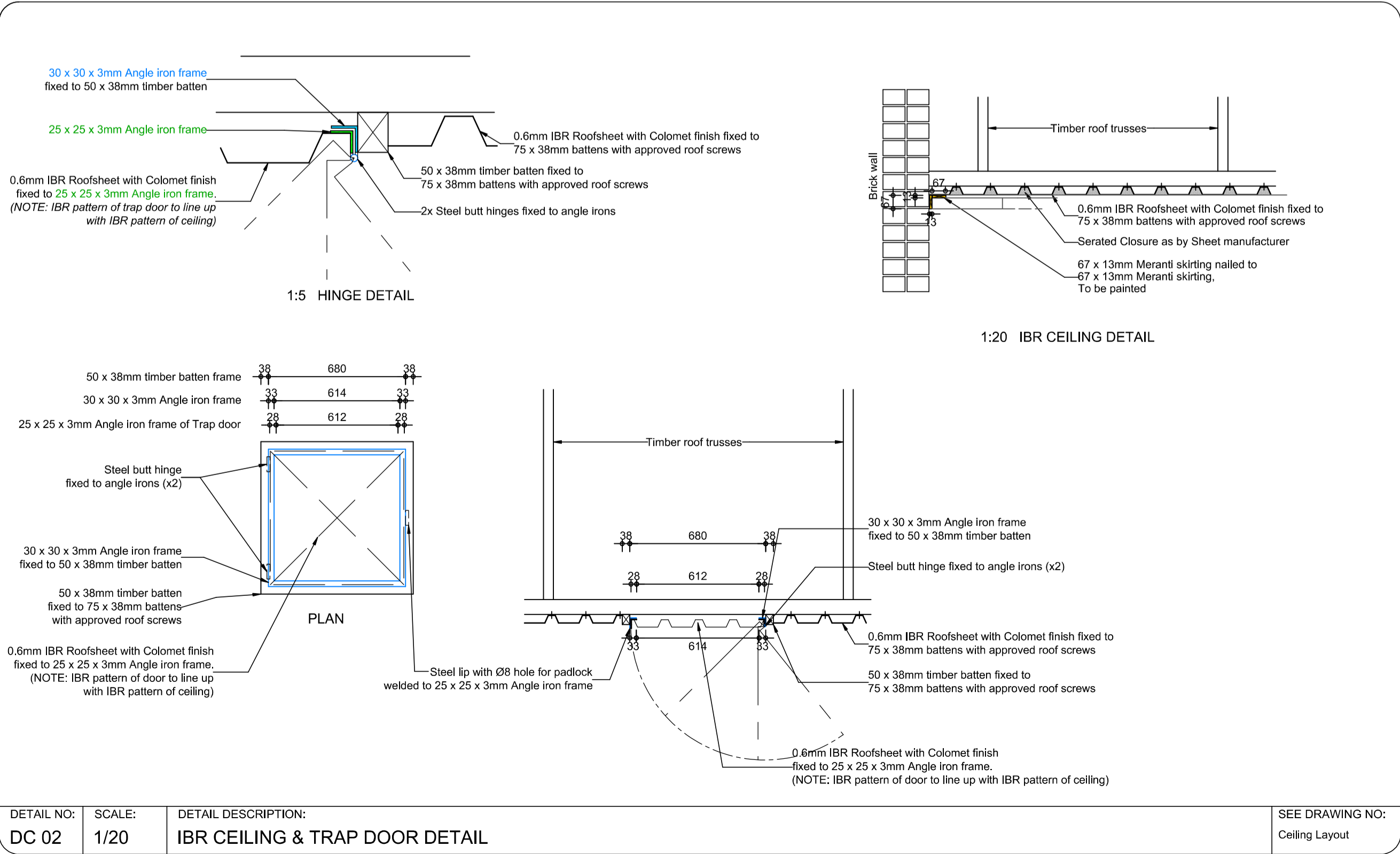
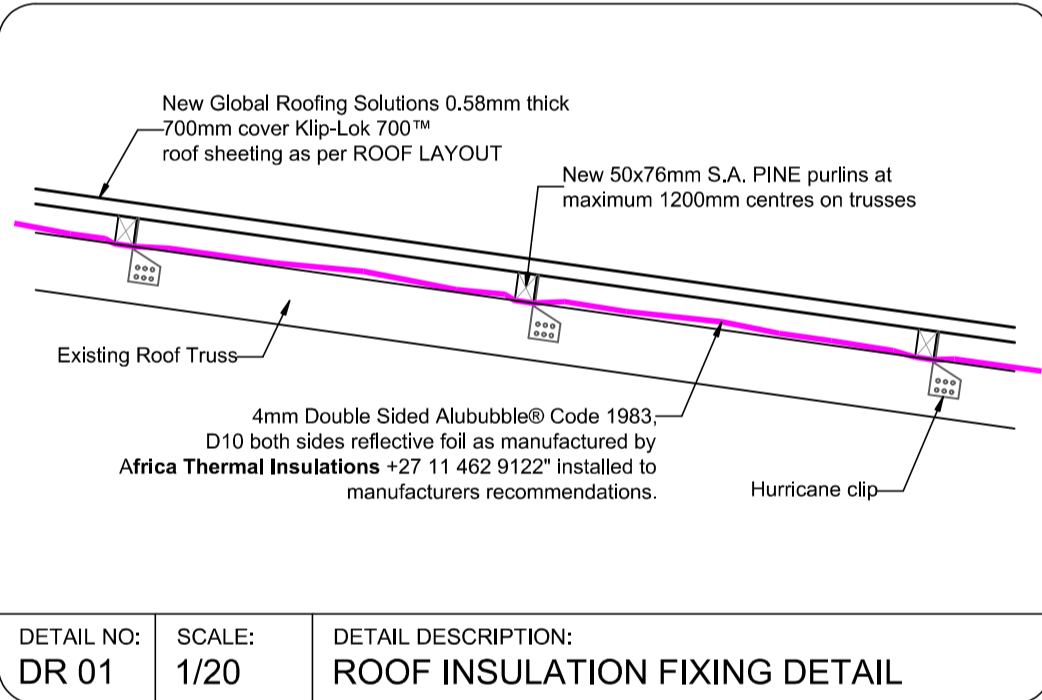


**WALL FINISH LAYOUT**  
**Block C: 4x Classroom Block**  
**Kwabulawayo HS**  
**1:100**

## LEGEND:

### WALL FINISHES

- PAINT - MAIN COLOUR  
Plascon Inspired Range  
Velodrift Y2-D2-3
- PAINT - ACCENT COLOUR  
Plascon Inspired Range  
Waxen Tint Y2-D2-1
- PAINT - ACCENT COLOUR  
Plascon Inspired Range  
Grey Saturday B1-E2-1
- PAINT - ACCENT COLOUR  
Plascon Inspired Range  
Go Go Red R4-A1-1
- PAINT - ACCENT COLOUR  
Plascon Inspired Range  
Splinter B4-E1-1



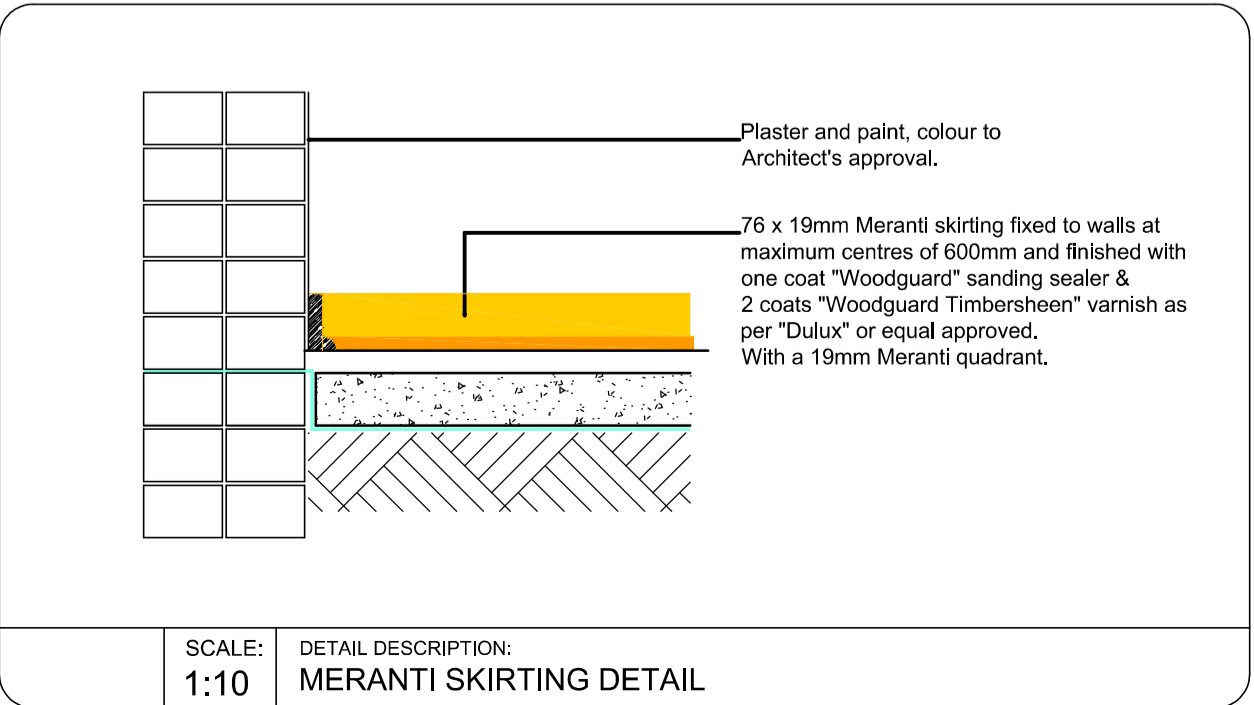
## FLOOR FINISH LAYOUT

**Block C: 4x Classroom Block**  
**Kwabulawayo HS**  
**1:100**

NOTE:  
If floors are powerfloated, the Architect  
should be contacted immediately

### LEGEND: Rooms

- Floorwork Superflex Bone (Colour code: MS081) fully flexible vinyl floor tiles  
300mm x 300mm x 2.5mm thick, manufactured in accordance with SANS 786:2000,  
laid in FloorworkX No. 60 Plus acrylic adhesive spread with a notched trowel on suitably  
prepared subfloor with a hygrometer reading showing a moisture content of less than  
70%, with joints welded with a fully flexible coloured 'Marley Welding Rod' to provide a  
smooth, hygienic sealed finish and rolled with 68kg three section metal roller on completion.
- Floorwork Superflex Blue Sky (Colour code: MS172) fully flexible vinyl floor tiles  
300mm x 300mm x 2mm thick, manufactured in accordance with SANS 786:2000,  
laid in FloorworkX No. 60 Plus acrylic adhesive spread with a notched trowel on suitably  
prepared subfloor with a hygrometer reading showing a moisture content of less than  
70%, with joints welded with a fully flexible coloured 'Marley Welding Rod' to provide a  
smooth, hygienic sealed finish and rolled with 68kg three section metal roller on completion.
- Floorwork Superflex Ash Grey (Colour code: MS022) fully flexible vinyl floor tiles  
300mm x 300mm x 2.5mm thick, manufactured in accordance with SANS 786:2000,  
laid in FloorworkX No. 60 Plus acrylic adhesive spread with a notched trowel on suitably  
prepared subfloor with a hygrometer reading showing a moisture content of less than  
70%, with joints welded with a fully flexible coloured 'Marley Welding Rod' to provide a  
smooth, hygienic sealed finish and rolled with 68kg three section metal roller on completion.




## Revisions

No	Date	Revision	By
00	2019-00-00	xxxxxx xxxxxx xxxxx xxx xx x	xxx

Approved

.....

End User:

 Department: Education  
PROVINCE OF KWAZULU-NATAL

Implementing Agent:

 DEVELOPMENT BANK OF SOUTHERN AFRICA  
Building Africa's Prosperity

In terms of the Copyright Act 98 of 1978, no part of this drawing may be reproduced, in any form or by any means, electronic or mechanical, including photocopying, recording or by any information storage and retrieval system, without written permission from the author.

Copyright of this drawing is reserved by the Architect.  
Dimensions to be checked on site before work is commenced.  
All building works to comply with SABS 0400-1990, South African Standard Code of Practice for the application of the National Building Regulations or latest revision thereof.

All building works to comply with the regulations as set out in the NHBRC Home Building Manual Parts 1.2 & 3 Rev 1 of February 1990 or latest revision thereof.

Architectural Consultant:

 25 years

86 Montague Street  
PO Box 2893  
Newcastle  
2940  
TEL.No: 034-312 4415  
Cell No: 083-631 9476  
E-mail: vos@aritech.co.za  
CK 93/207/19/25  
Spectrum Architects cc trading as Aritech Architects

Discipline

**Architectural Construction Drawing**

Service

Construction of New Ablution Blocks  
& Renovations of Existing Buildings for  
Kwabulawayo High School

Drawing title

**Block C: 4x Classroom Block**

Floor Finish Layout  
Wall Finish Layout  
Ceiling Trapdoor Detail  
Door Schedule  
Door Signage Detail Type 1 & 2  
Window & Gate Schedule

Ref. no	Designed
RFP 116/2018	---
Scale	Drawn
As Shown	JVR / JVV
Drawing date	Checked
19 Aug 2022	IPV
Time stamp	Date started
08:45:23	11 Jun 2019
drawing number	revision
NC(DBSA)KWAB-19-04-260[08]	R 0